

Paris Metropolis, planning & governance

Conference June 13th 2011

Mazovia / Warsaw / Poland

*Martine Liotard,
architect / urban & regional planner IAU-IDF*



INSTITUT
D'AMÉNAGEMENT
ET D'URBANISME

ÎLE-DE-FRANCE

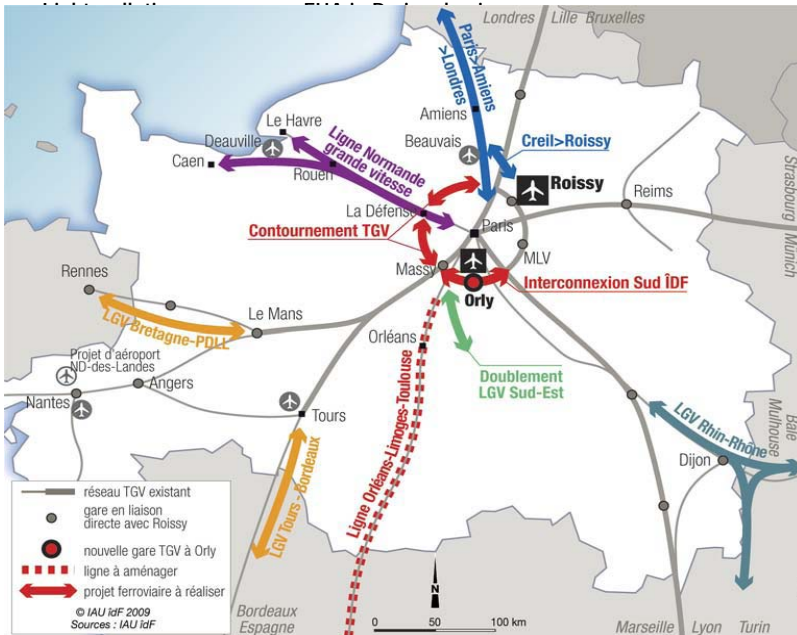
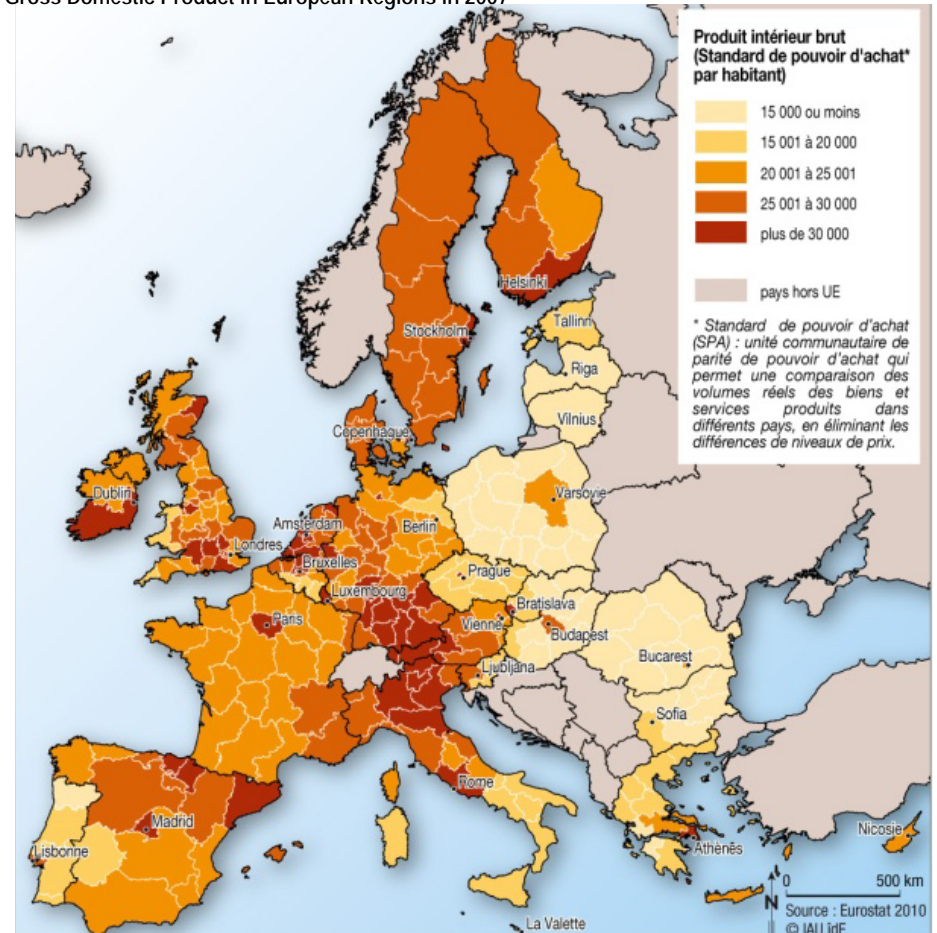


1. Capital Region / France

12000 km² ; 11,8 M inh. / 19% France ; GDP = 29%, first in GDP / inh. ; 35% executives ; 37% R&D salaries ; 982 inh / km²



Gross Domestic Product in European Regions in 2007



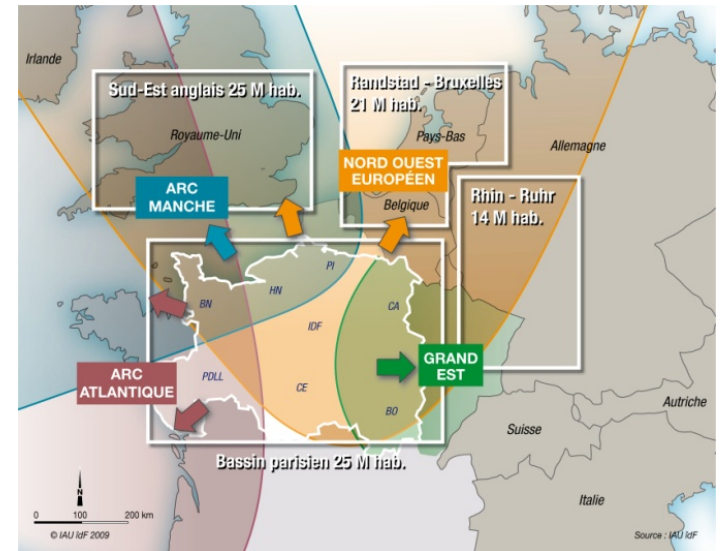
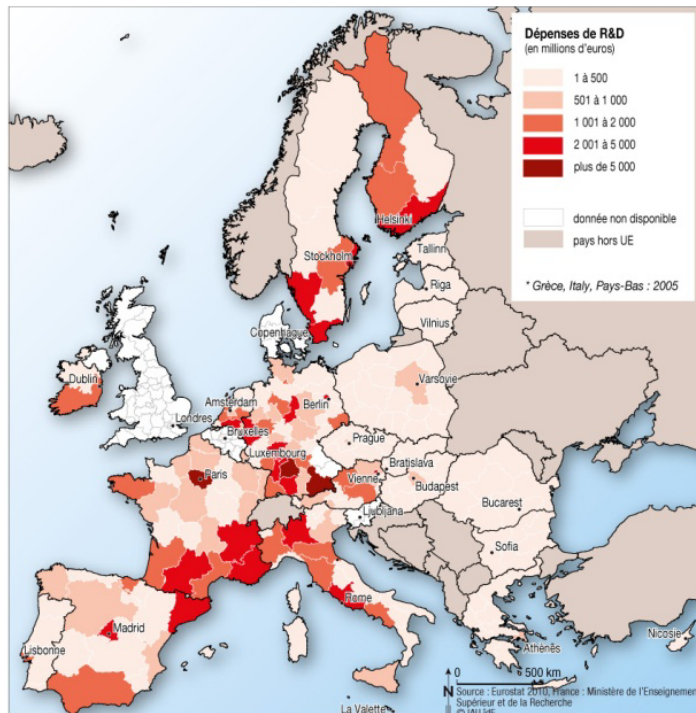
2. Paris Region, global city

4% European GDP, 6^e in attractivity in the world in 2010,
 first touristic region in the world ; first European air hub (83 M pass
 2009)

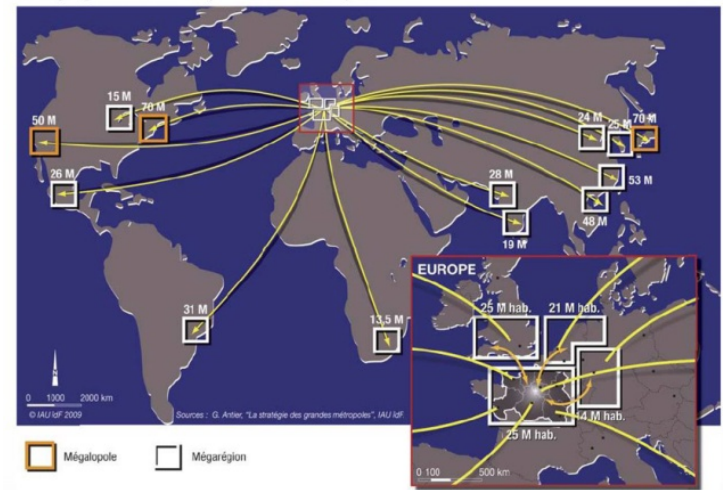


Fortune Global 500 in 2010,
 large groups headquarters

Research & Development expenditure
 in European Regions in 2007



Les mégarégions dans le monde (en millions d'habitants)



3. Ile-de-France / Grand Paris, an old story

1790, Paris & Seine Departments

8 new Departments replace Seine Department, 1964

1860, Near suburb annexation by Paris,

A Region Prefect, 1966 / a Paris Mayor, 1977

1920-30, Unfollowed up Debates about « Grand Paris »

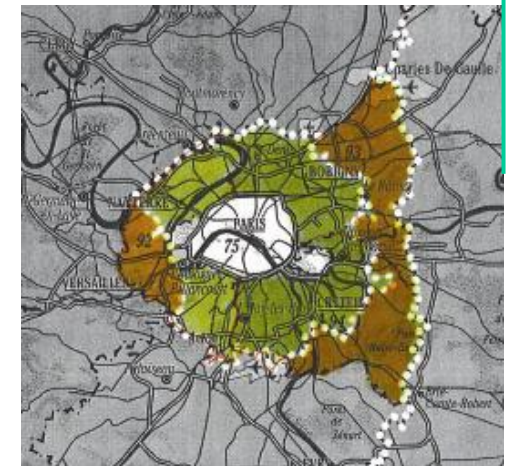
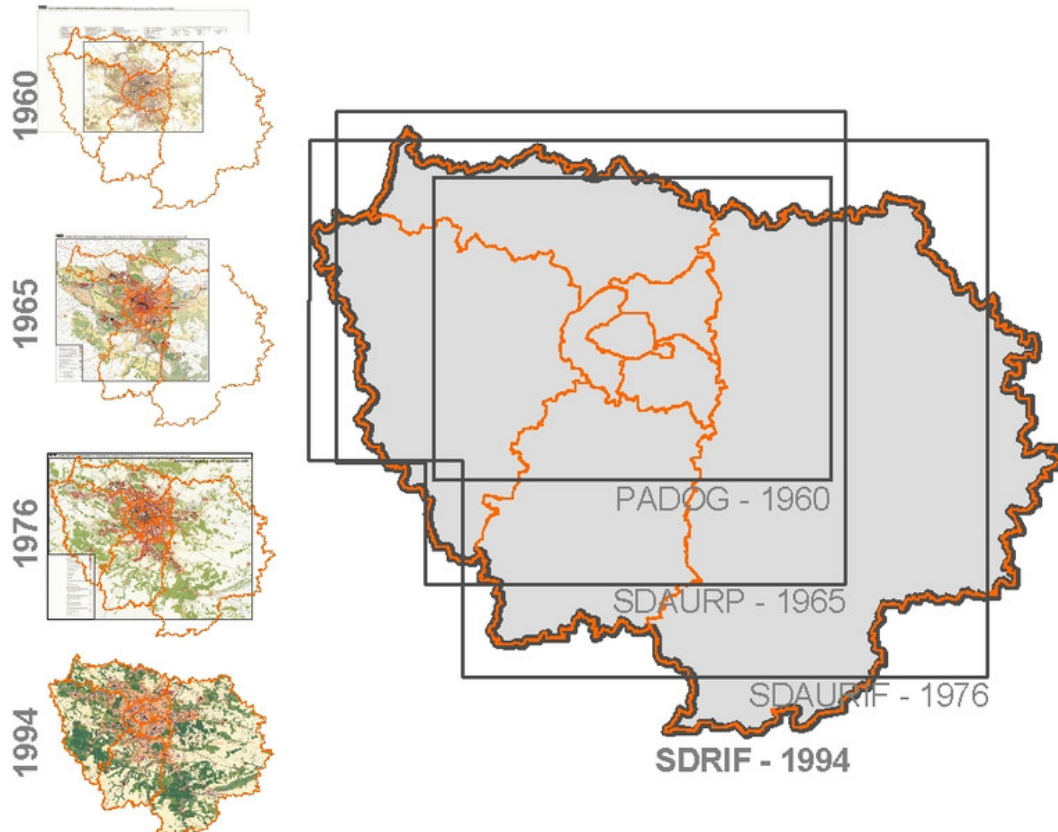
Paris Région (Direct suffrage, 1986), 1976

1968, Seine Department Disappearance

Regional State schemes, 1965, 1976 & 1994

1961 / 1976, Paris-Region District

SDRIF by Region (Law 04.02.995), 2004-2008



Previous Seine in the current Region

Échelles successives de la planification

4. The metropolitan scene

Chevènement Law over intercommunality, 1999

Paris- suburb coopération, 2001

Presidential speeches / Grand Paris, 2007, 2008

Territorial Conference, 2007

Creation of Paris-Metropolis Trade, 2008

Local elections, 2008 / regional elections 2010

Creation of State Secretary for Grand Paris, 2008

International consultation Grand pari(s), 2008 / 2009

Local financing Reform (business tax removal), 2009

Law over Grand Paris, 2010

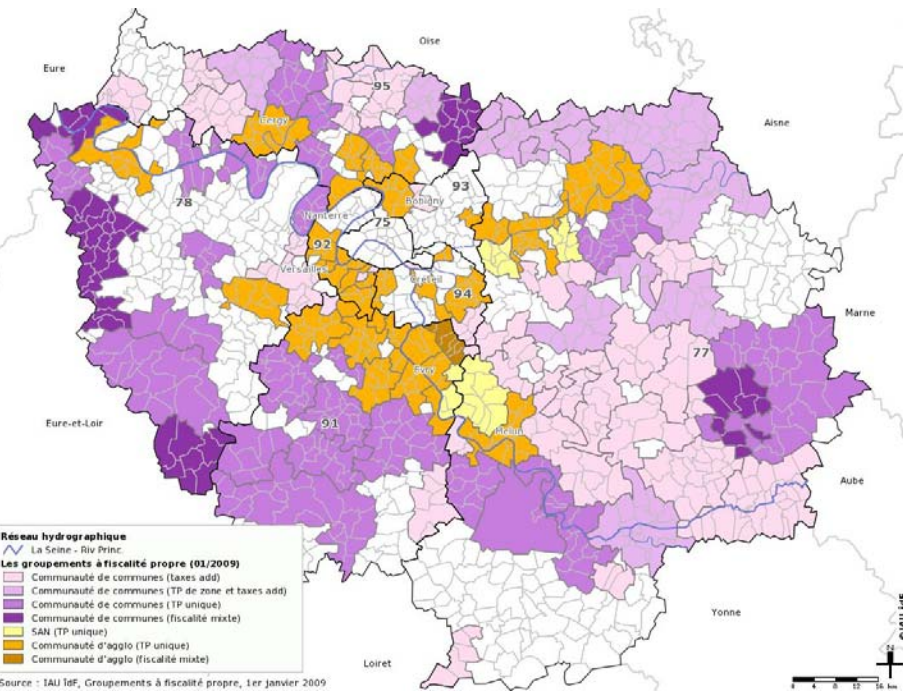
Creation of Grand Paris Company, 2010

Law about Territorial Reform, 2010-14

Agreement on the Grand Paris Express Project, 2011

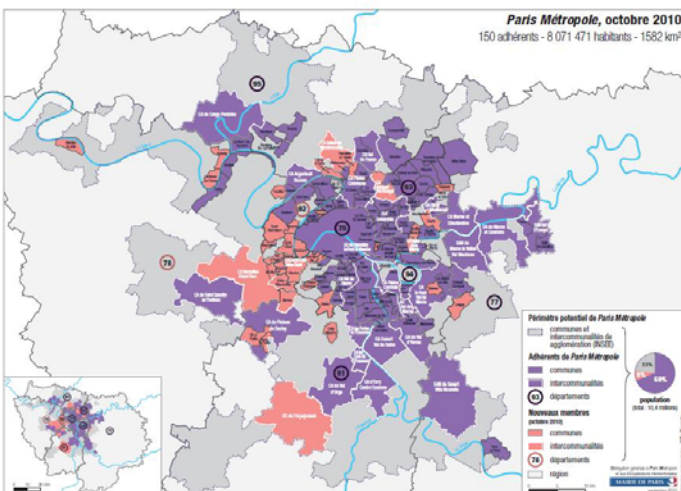
Approbation by law of reviewed SDRIF, 2011

Presidential election, 2012



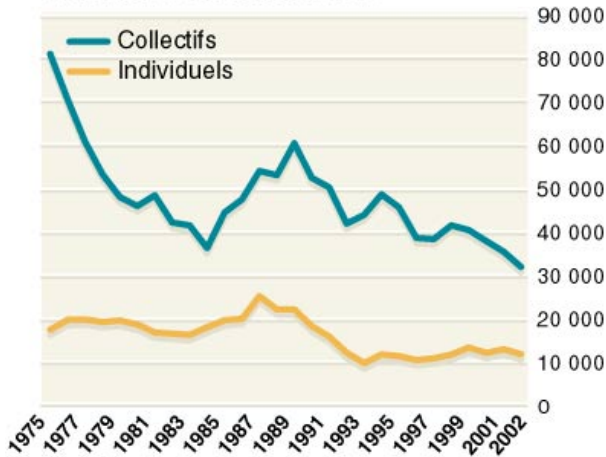
Intermunicipal communities, 2009

Paris-métropole, october 2010



5. First Act : Stakes of 1994 Regional Scheme revision

Evolution de la construction



Strong decrease of housing construction and urban development

Land consumption, air pollution and new environmental and climatic objectives

Lack of public transport suburb / suburb, overcharged central network

Decrease of economic growth

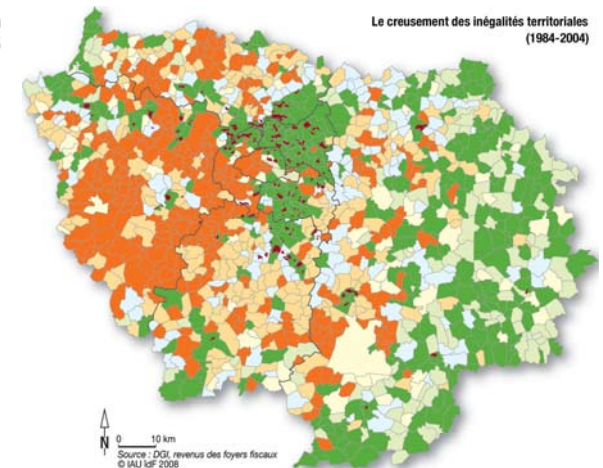
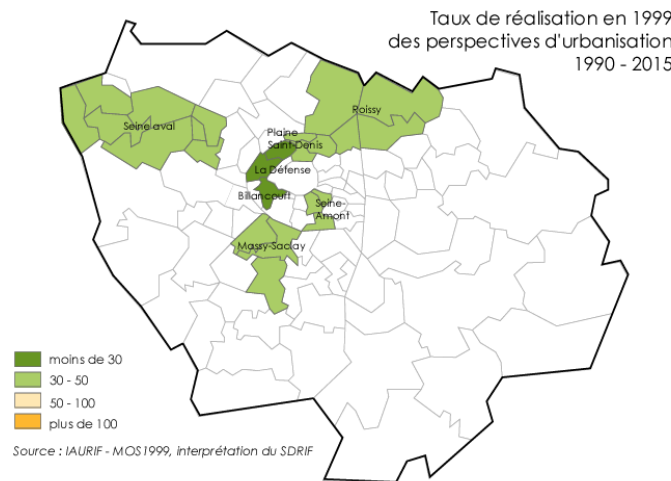
Increase of social and urban inequities

Environmental stakes

Decrease of housing construction

% of realisation of urban development objectives 1990-2015 in strategic sites

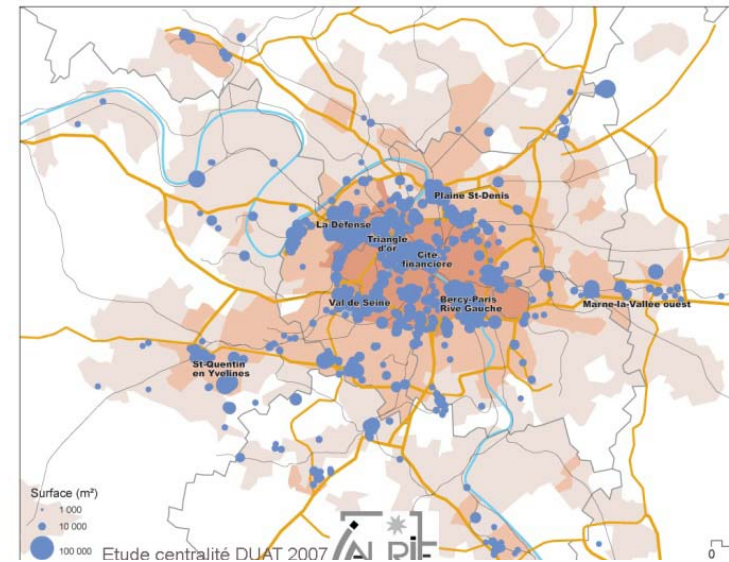
Income evolution 1984 – 2004 related to regional average



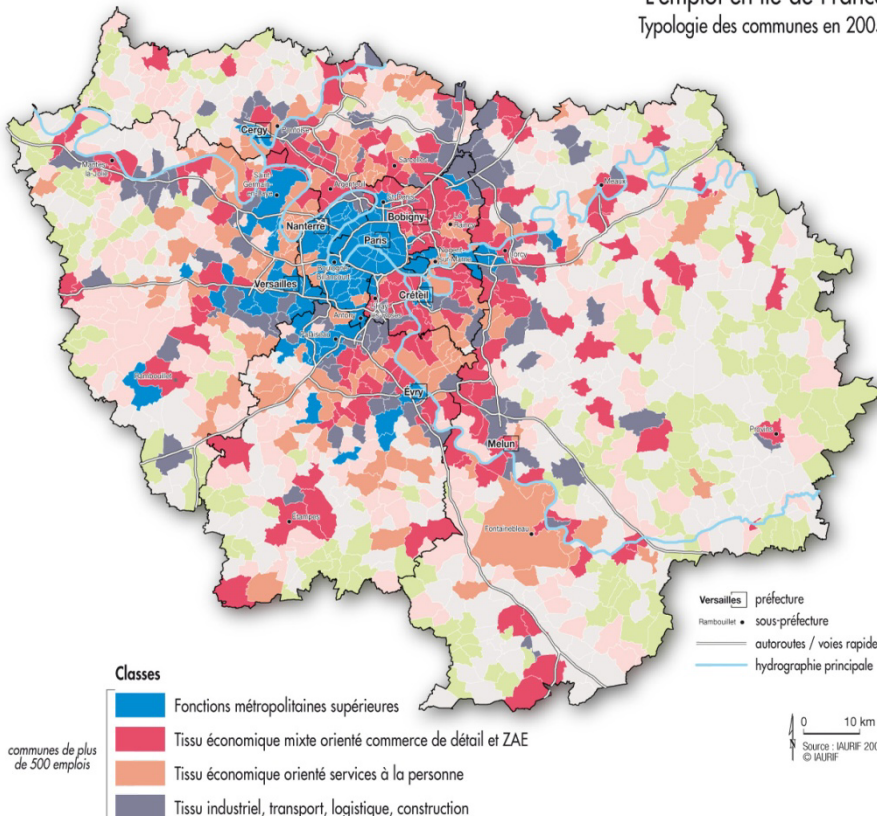
6. Paris metropolitan economy

A strong economic place : 720 000 firms, 6 M employed (industry 0,4 M / construction 0,3 M, trade / 0,7 M, services 2,7 M), 2nd financial place after London, 50 M m² for offices, 61 M tourists in 2008

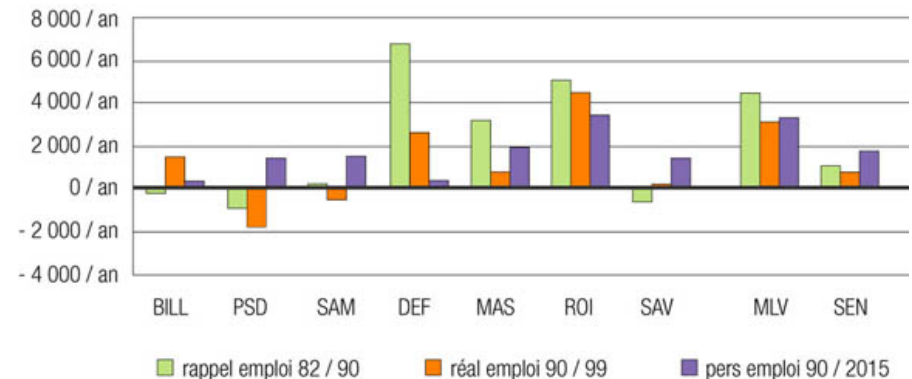
But a decrease of territorial dynamics in strategic sites



L'emploi en Ile-de-France
Typologie des communes en 2005



Evolution de l'emploi par site stratégique



Evolution de la population par site stratégique

7. The 2030 SDRIF

Cohesion, climate change, new energy, attractivity

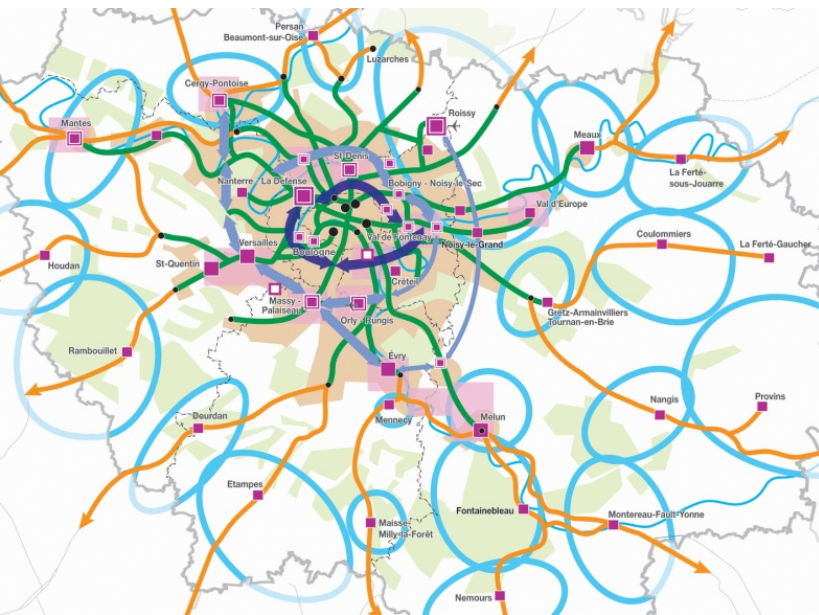
Again housing crisis, 60 000 flats / year

+ 6 to 8% more employment (0,7 M jobs) and population, a diversified & innovative economy

A sustainable mobility, an extended mesh and renewed public transport network

Urban sprawl contained, natural resources preserved, a compact city

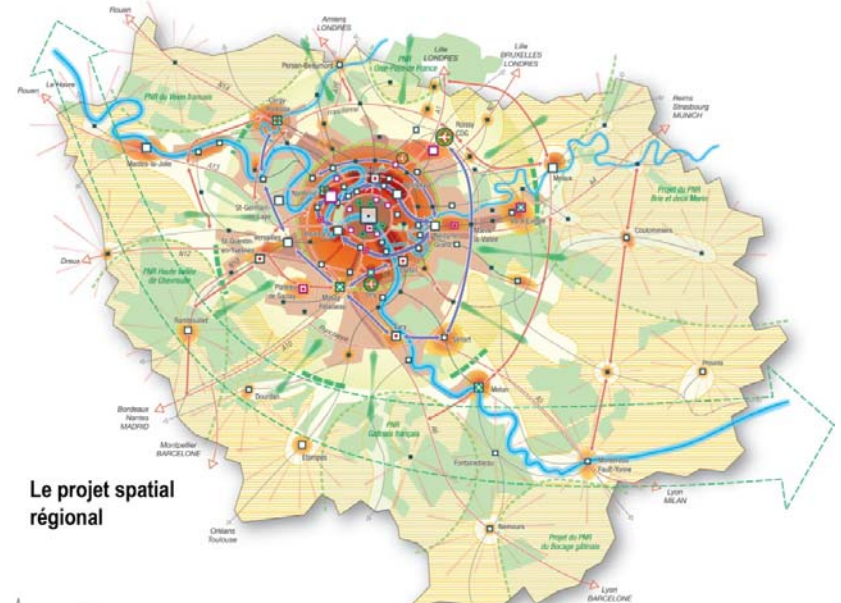
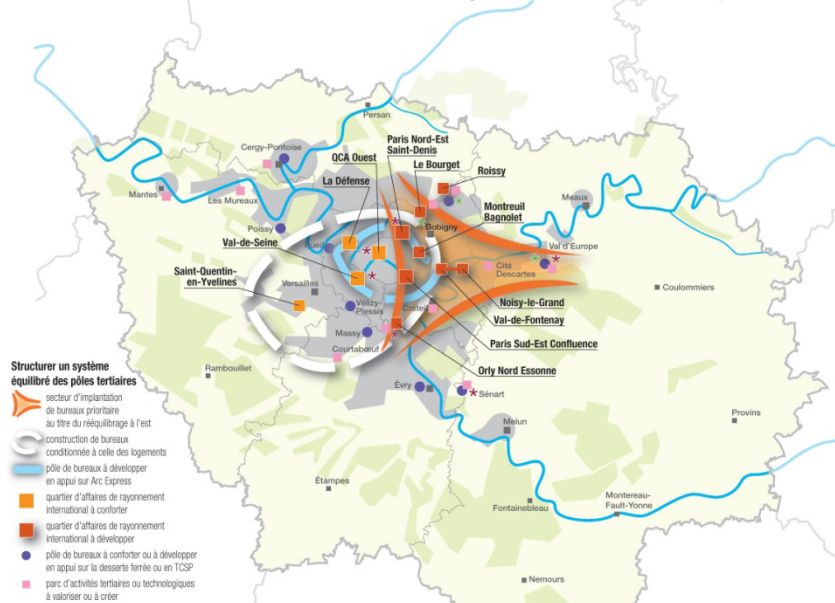
Equipments & services, an attractive metropolis



A local mobility in the suburb, a mesh network with Arc Express, a new central ring in the middle suburb

A reinforced and extended geography of tertiar-sector centres

Gagner en attractivité et rééquilibrer les pôles tertiaires

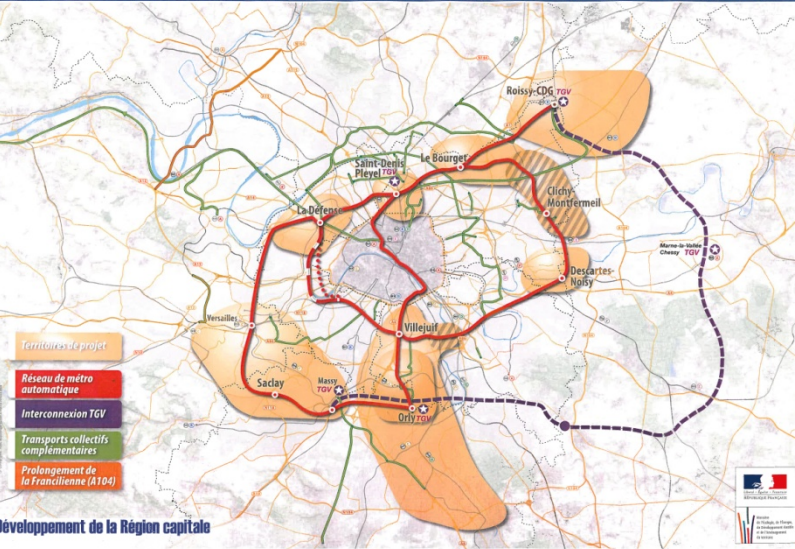


8. 2nd Act : Grand Paris Project

A top secret project of high speed relationships between high development centers (negotiated with concerned local communities)

The regional project of a public transport ring which improves the whole network and gives access to development sites of middle suburb

A 4 months public debate about the 2 projects



2009, Grand Paris Project, the big 8 (42 stations) and 9 clusters

The Arc Express regional Project, negotiated with all communities

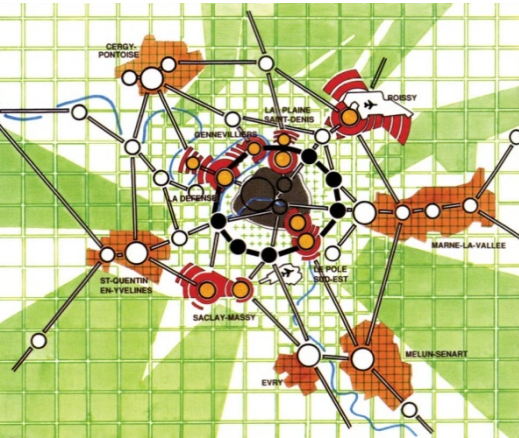
A comparison between the 2 projects



9. Old and new strategic sites

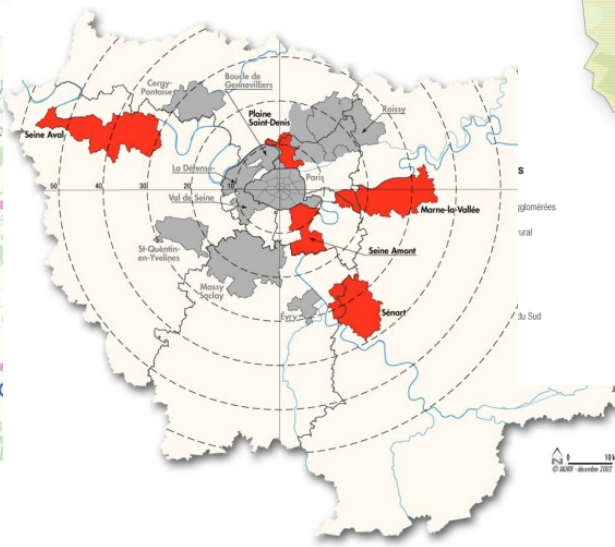
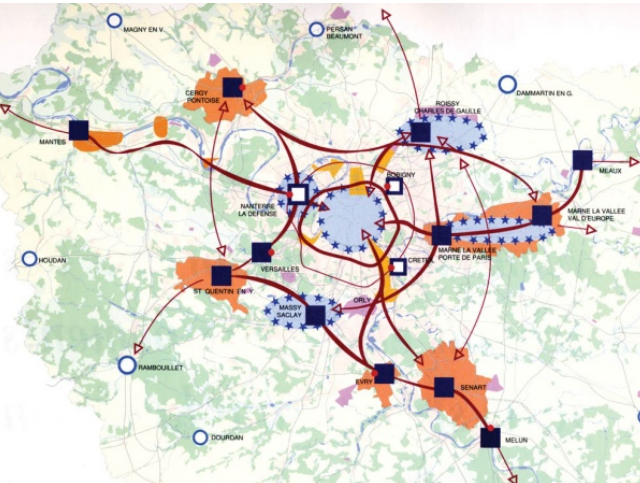
A long continuity of the regional geography, from the 1964' 5 new towns

A new economic role for the close suburb

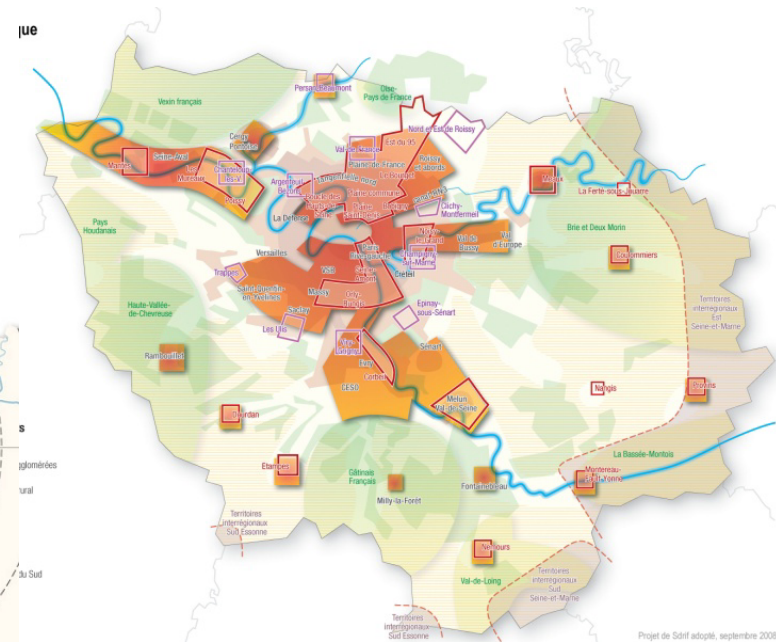


Livre Blanc, 1990

European scale centers, 1994



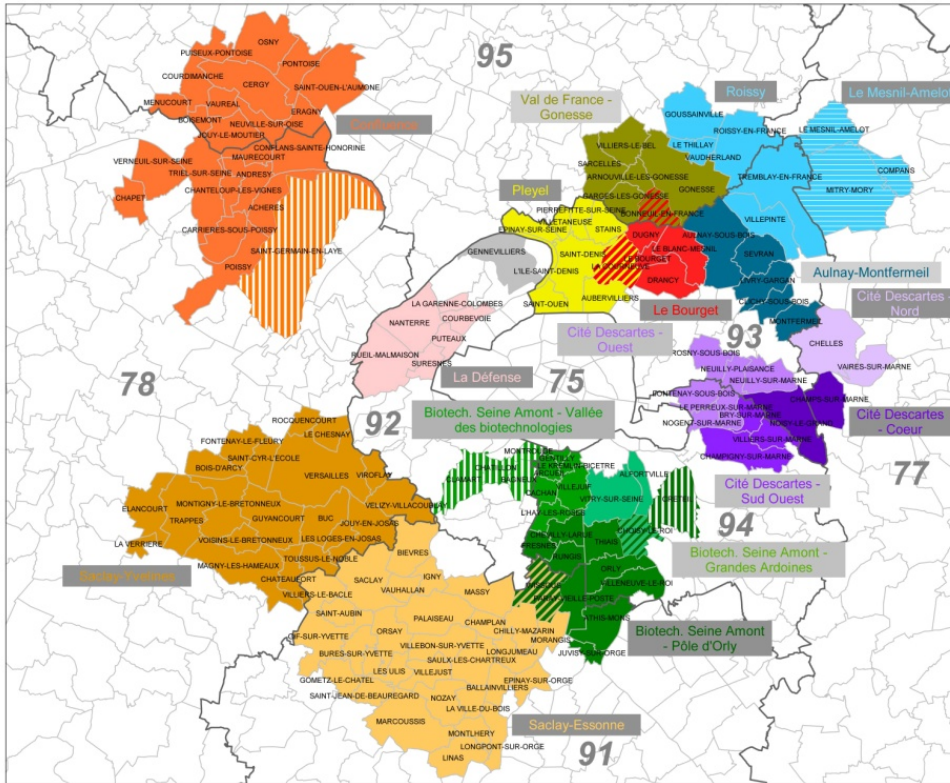
Strategic sites for IDF Region in 1994



Strategic sites in SDRIF, 2008

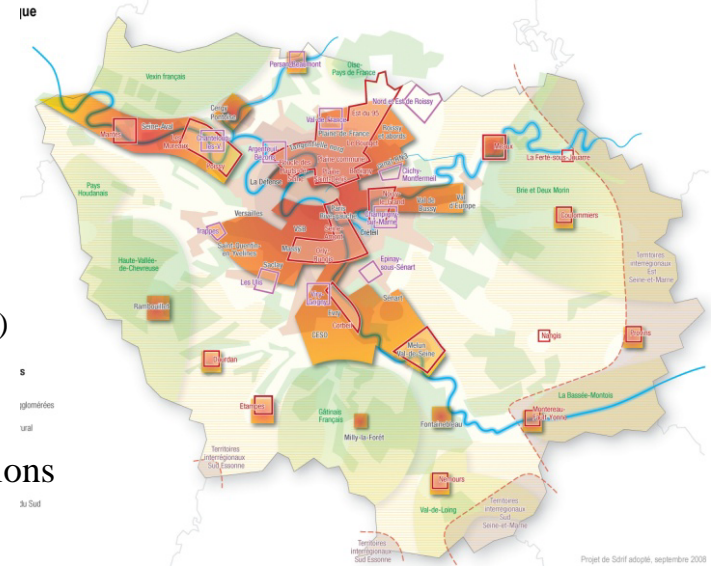
10. Grand Paris strategic sites

Périmètres des CDT potentiels au 1er juin 2011



New strategic sites and Territorial Development contracts (Grand Paris Law around future stations)

Between Grand Paris Company and local communities



Strategic sites for IDF Region in 1994

Territorial Development Contracts in 2011 (Grand Paris Company & local communities)

Grand Paris Law :

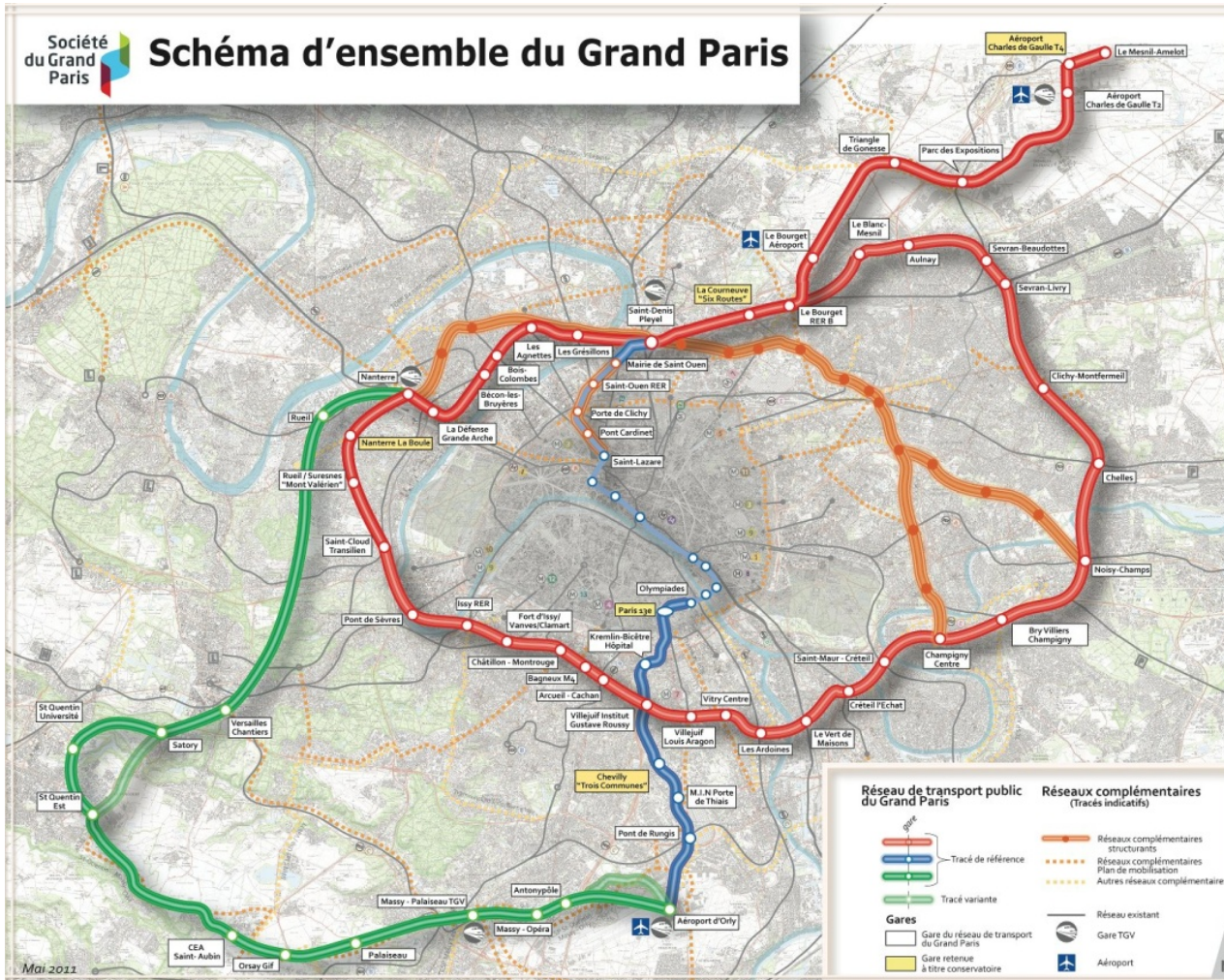
Financing the transport network urban development / 800 m around stations

Consultation of communities / 250 m

Agreement of communities / 1500 m

Partenarial Development Contracts with concerned communities

11. 3rd Act : Grand Paris Express, the conciliation ?



A close negotiation between the Minister in charge of Grand Paris Project, the GP Company and the Region Council, an official Agreement in mai 2011

Many local communities and Departments involved in the discussion

A 37,5 milliards euros project 2017 – 2025 and further, including modernization of existing network (17 Md) and many parts of Arc Express (72 stations, 175 km)

An uncertain financing : 9 Md / State, 9 Md / communities, 7 Md / business taxes and ticket higher price, 7 Md / State Loan, etc.

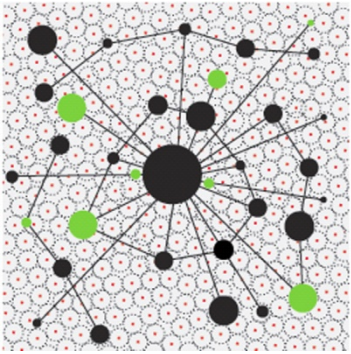
12. From Grand pari(s) consultation to AIGP

LIN : macro-micromobilités

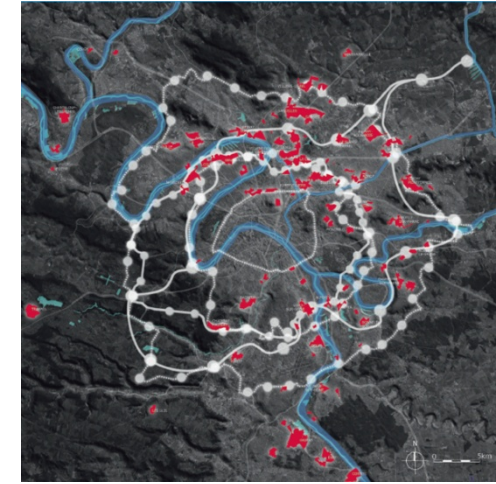
Centralités multiples

Schéma global

Micromobilité dans la ville diffuse



- Centralités urbaines
- Centralités vertes
- Ville diffuse
- Intensifications

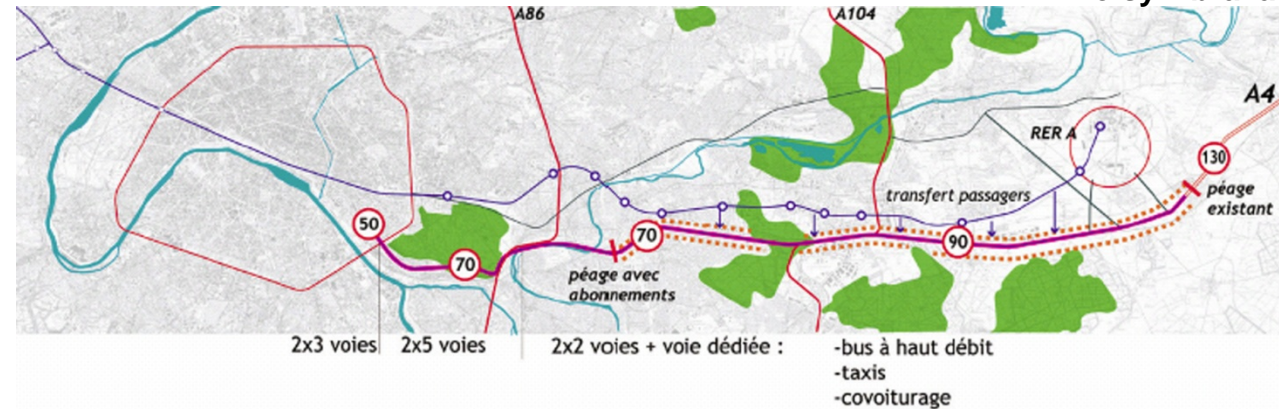


Castro : l'accessibilité pour tous

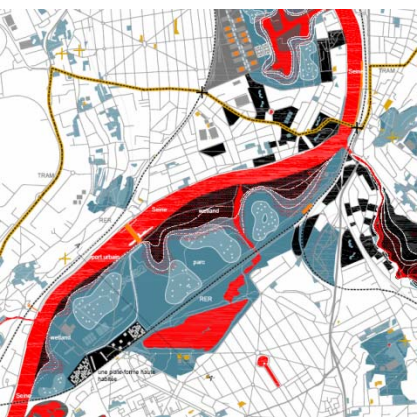
La desserte des grands ensembles par des tramways

Descartes : apaisement, structuration progressive

1. Logique des segments
2. A4 apaisée
3. Val de Fontenay RER + bureaux
4. Noisy-Abraxas



13. The new regional scene



AIGP : Studio 09 les
wetlands, Seine-Amont



A Central State as a strategic but unpeccunious actor of the Capital Region
The come back of the Region Council with approved 2008 SDRIF and new
revision until 2013

Paris Metropolis Trade, an informal actor, which agregates most of local
communities and may become the metropolitan instance of debate

The Grand Paris International Workshop as a new engineering partner with
IAU-IDF, the official engineering team of SDRIF ?

The Grand Paris Company, main urban Develoment operator in the CDT and
(half with the STIF, regional transport authority) the Grand Paris Network

Many IDF communities involved in the Grand Paris Project even if the new
rules mark a decline of decentralization

On the whole, a big and financially uncertain project, of whom conceptual
basis has not been really discussed during the public debate and since 2008
(focus on transport scheme, AIGP architects on an environmental line quite
different of Grand Paris primary conception)

A hesitating step in the direction of a metropolitan governance ?